

Performance Comparison

February '18 vs. '17



Performance Comparison

February '18 vs. '17, CY18 & FY18 Year to Date

Operations

	'18	'17	Change
Trains (Daily)	1,058 (37.8)	1,015 (36.3)	4.2 %
Calendar Year to Date	2,232 (37.8)	2,138 (36.2)	4.4 %
Fiscal Year to Date	9,089 (37.4)	8,410 (34.6)	8.1 %

Railroad Self-Assessment Revenue

	'18	'17	Change
Revenue	\$9.0 M	\$8.6 M	4.4 %
Calendar Year to Date	\$18.3 M	\$17.2 m	6.5 %
Fiscal Year to Date *	\$71.9 M	\$66.5 M	8.1 %

* Note: Does not include reconciliations / adjustments for fiscal year-end.

Performance Use Fees & Container Charges

February '18 vs. '17, CY18 & FY18 Year to Date

Operations – On Corridor (Use Fees)

	'18	'17	Change
TEU's *	380,561 (7,682)	350,913 (7,084)	8.5 %
Calendar Year to Date	781,305 (7,485)	705,518 (6,759)	10.7 %
Fiscal Year to Date	3,158,763 (7,347)	2,766,494 (6,435)	14.2 %

Operations – Around Corridor (Container Charges)

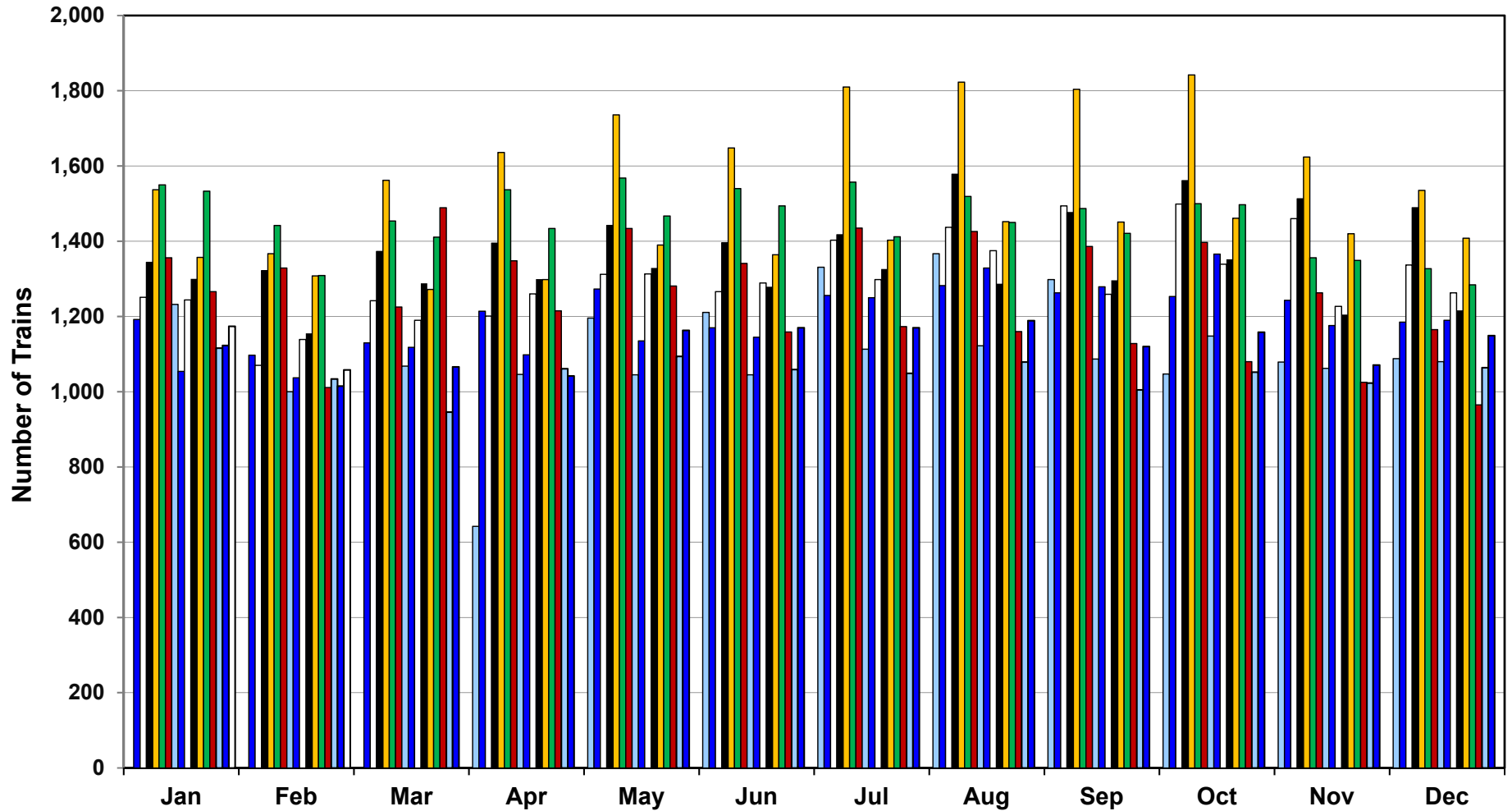
	'18	'17	Change
TEU's *	28,503 (575)	39,165 (791)	- 27.2 %
Calendar Year to Date	60,120 (576)	76,978 (737)	- 21.9 %
Fiscal Year to Date	252,259 (587)	296,053 (689)	-14.8 %

Operations – Combined

	'18	'17	Change
TEU's *	409,063 (8,258)	390,078 (7,874)	4.9 %
Calendar Year to Date	841,426 (8,061)	782,496 (7,496)	7.5 %
Fiscal Year to Date	3,411,022 (7,934)	3,062,547 (7,124)	11.4 %

* Note: Numbers in () are the Average Daily Containers, Daily TEU's ÷ 1.74 = Containers.

Alameda Corridor Train Counts



Average Daily Trains*:

<u>2002</u>	<u>2003</u>	<u>2004</u>	<u>2005</u>	<u>2006</u>	<u>2007</u>	<u>2008</u>	<u>2009</u>	<u>2010</u>
39	40	44	47	55	49	44	36	39
<u>2011</u>	<u>2012</u>	<u>2013</u>	<u>2014</u>	<u>2015</u>	<u>2016</u>	<u>2017</u>	<u>2018</u>	
42	42	45	47	38	34	37	38	

2002	2003	2004	2005	2006	2007
2008	2009	2010	2011	2012	2013
2014	2015	2016	2017	2018	

* Corridor Capacity 150 Trains per Day

Use Fees & Container Charges

as of February 28, 2018

