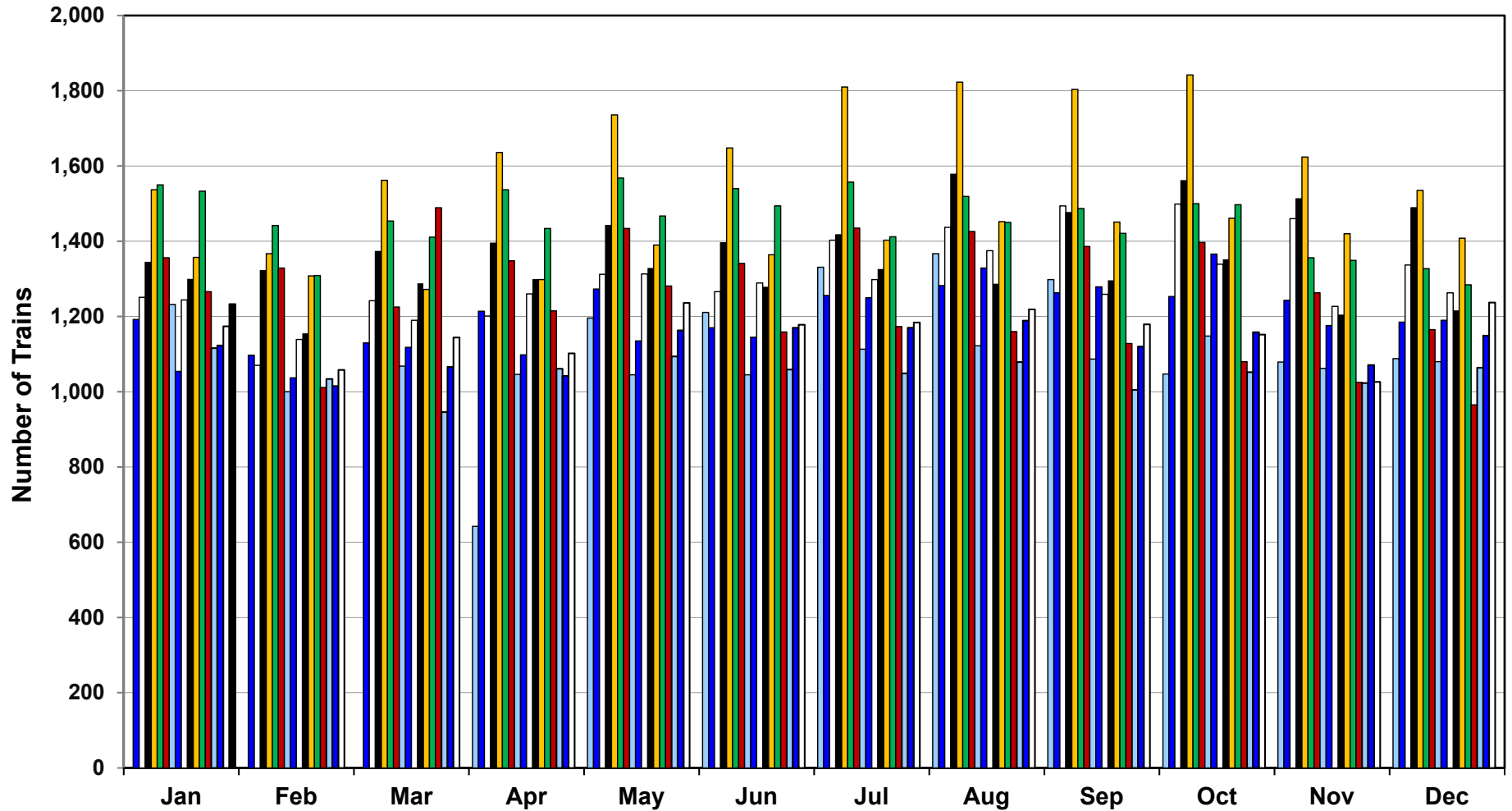


Number of Trains Running on the Alameda Corridor

	2002	2003	2004	2005	2006	2007	2008	2009	2010	2011	2012	2013	2014	2015	2016	2017	2018	2019	2019 Daily Avg. per Month *
Jan		1,192	1,251	1,344	1,537	1,550	1,356	1,232	1,054	1,244	1,300	1,357	1,533	1,266	1,116	1,123	1,174	1,233	39.8
Feb		1,097	1,070	1,322	1,367	1,442	1,329	1,000	1,037	1,139	1,155	1,308	1,309	1,011	1,034	1,015	1,058		
Mar		1,130	1,242	1,373	1,562	1,454	1,225	1,068	1,118	1,190	1,288	1,272	1,411	1,489	946	1,066	1,144		
Apr	642	1,214	1,201	1,395	1,636	1,537	1,348	1,046	1,098	1,260	1,299	1,298	1,434	1,215	1,061	1,042	1,102		
May	1,196	1,273	1,312	1,442	1,736	1,568	1,434	1,045	1,135	1,313	1,329	1,390	1,467	1,281	1,094	1,163	1,236		
Jun	1,211	1,170	1,266	1,396	1,648	1,540	1,341	1,045	1,145	1,289	1,279	1,364	1,494	1,159	1,059	1,170	1,178		
Jul	1,331	1,256	1,403	1,417	1,810	1,557	1,435	1,113	1,250	1,298	1,326	1,403	1,412	1,173	1,049	1,170	1,184		
Aug	1,367	1,282	1,437	1,578	1,823	1,519	1,426	1,122	1,329	1,375	1,287	1,452	1,450	1,196	1,079	1,189	1,219		
Sep	1,298	1,263	1,494	1,476	1,804	1,487	1,386	1,087	1,279	1,259	1,296	1,451	1,421	1,128	1,005	1,120	1,179		
Oct	1,047	1,253	1,499	1,561	1,842	1,500	1,397	1,148	1,366	1,339	1,352	1,461	1,497	1,080	1,052	1,158	1,152		
Nov	1,079	1,243	1,460	1,513	1,624	1,356	1,263	1,062	1,176	1,227	1,205	1,420	1,349	1,025	1,023	1,071	1,026		
Dec	1,088	1,185	1,337	1,489	1,535	1,327	1,165	1,080	1,190	1,263	1,216	1,408	1,284	965	1,064	1,149	1,237		
Total	10,259	14,558	15,972	17,306	19,924	17,837	16,105	13,048	14,177	15,196	15,332	16,584	17,061	13,988	12,582	13,436	13,889	1,233	
Avg. # per day	39	40	44	47	55	49	44	36	39	42	42	45	47	38	34	37	38	40	
Number of Trains to Date																			258,487

* Corridor Capacity 150 Trains per Day

Alameda Corridor Train Counts



Average Daily Trains*:

<u>2002</u>	<u>2003</u>	<u>2004</u>	<u>2005</u>	<u>2006</u>	<u>2007</u>	<u>2008</u>	<u>2009</u>	<u>2010</u>
39	40	44	47	55	49	44	36	39
<u>2011</u>	<u>2012</u>	<u>2013</u>	<u>2014</u>	<u>2015</u>	<u>2016</u>	<u>2017</u>	<u>2018</u>	<u>2019</u>
42	42	45	47	38	34	37	38	40

2002	2003	2004	2005	2006	2007
2008	2009	2010	2011	2012	2013
2014	2015	2016	2017	2018	2019

* Corridor Capacity 150 Trains per Day