

# ***Performance Comparison***

***August '18 vs. '17***



# Performance Comparison

## *August '18 vs. '17, CY18 & FY19 Year to Date*

### *Operations*

	'18	'17	Change
<b>Trains (Daily)</b>	<b>1,219 (39.3)</b>	<b>1,189 (38.4)</b>	<b>2.5 %</b>
Calendar Year to Date	9,295 (38.3)	8,938 (36.8)	4.0 %
Fiscal Year to Date	2,403 (38.8)	2,359 (38.0)	1.9 %

### *Railroad Self-Assessment Revenue*

	'18	'17	Change
<b>Revenue</b>	<b>\$9.5 M</b>	<b>\$9.4 M</b>	<b>0.8 %</b>
Calendar Year to Date	\$74.9 M	\$70.6 M	6.1 %
Fiscal Year to Date *	\$18.8 M	\$18.6 M	1.3 %

\* Note: Does not include reconciliations / adjustments for fiscal year-end.

# Performance Use Fees & Container Charges

## August '18 vs. '17, CY18 & FY19 Year to Date

### Operations – On Corridor (Use Fees)

	'18	'17	Change
<b>TEU's *</b>	<b>432,483 (7,886)</b>	<b>426,520 (7,777)</b>	<b>1.4 %</b>
Calendar Year to Date	3,238,756 (7,533)	3,030,728 (7,050)	6.9 %
Fiscal Year to Date	854,819 (7,793)	841,903 (7,675)	1.5 %

### Operations – Around Corridor (Container Charges)

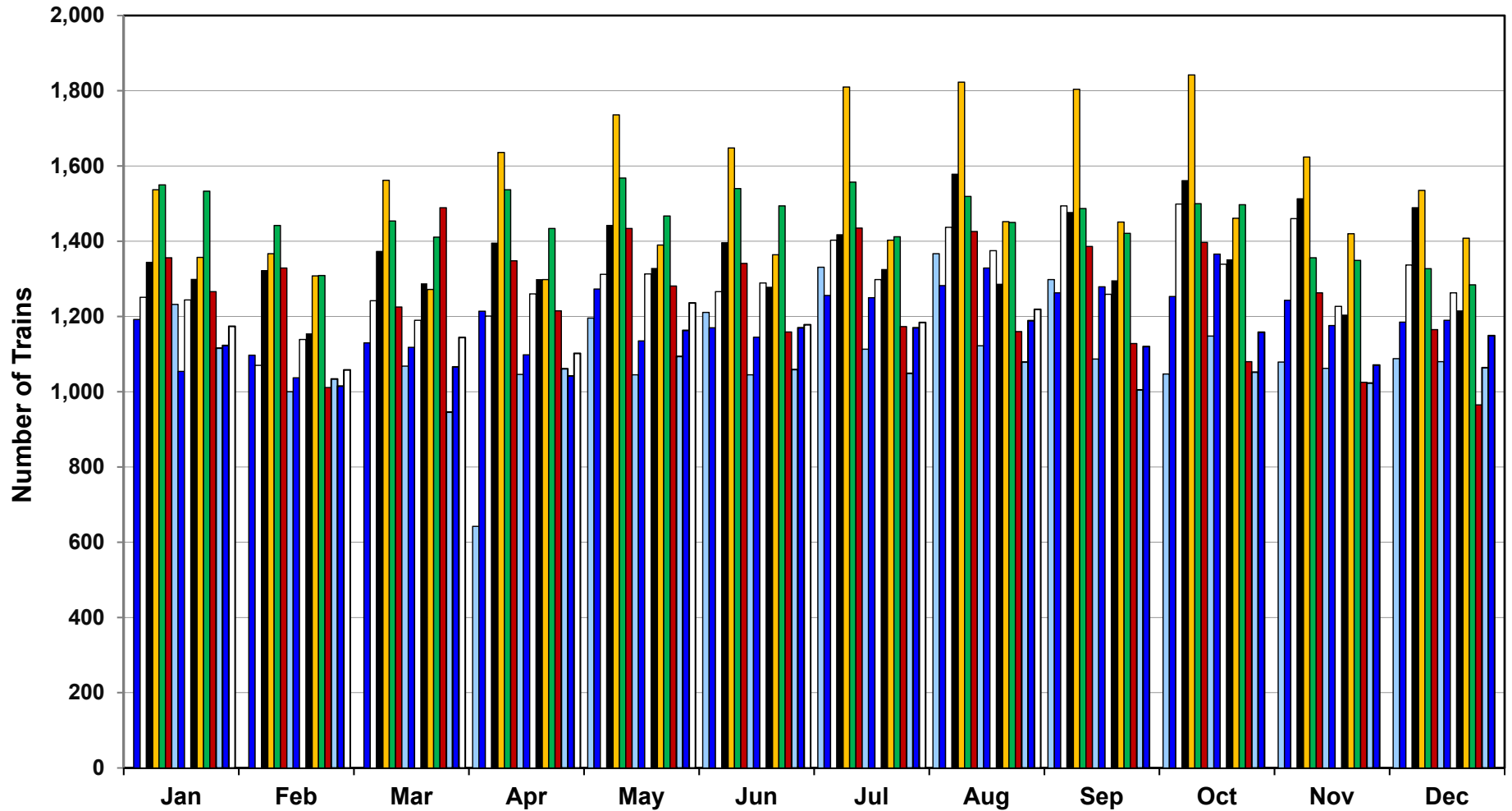
	'18	'17	Change
<b>TEU's *</b>	<b>23,013 (420)</b>	<b>37,471 (683)</b>	<b>- 38.6 %</b>
Calendar Year to Date	213,081 (496)	284,124 (661)	- 25.0 %
Fiscal Year to Date	47,524 (433)	69,440 (633)	- 31.6 %

### Operations – Combined

	'18	'17	Change
<b>TEU's *</b>	<b>455,496 (8,305)</b>	<b>463,990 (8,460)</b>	<b>- 1.8 %</b>
Calendar Year to Date	3,451,836 (8,029)	3,314,852 (7,710)	4.1 %
Fiscal Year to Date	902,343 (8,226)	911,343 (8,308)	- 1.0 %

\* Note: Numbers in ( ) are the Average Daily Containers, Daily TEU's ÷ 1.77 = Containers.

# Alameda Corridor Train Counts



## Average Daily Trains\*:

<u>2002</u>	<u>2003</u>	<u>2004</u>	<u>2005</u>	<u>2006</u>	<u>2007</u>	<u>2008</u>	<u>2009</u>	<u>2010</u>
39	40	44	47	55	49	44	36	39
<u>2011</u>	<u>2012</u>	<u>2013</u>	<u>2014</u>	<u>2015</u>	<u>2016</u>	<u>2017</u>	<u>2018</u>	
42	42	45	47	38	34	37	38	

2002	2003	2004	2005	2006	2007
2008	2009	2010	2011	2012	2013
2014	2015	2016	2017	2018	

\* Corridor Capacity 150 Trains per Day

# Use Fees & Container Charges

## as of August 31, 2018

