

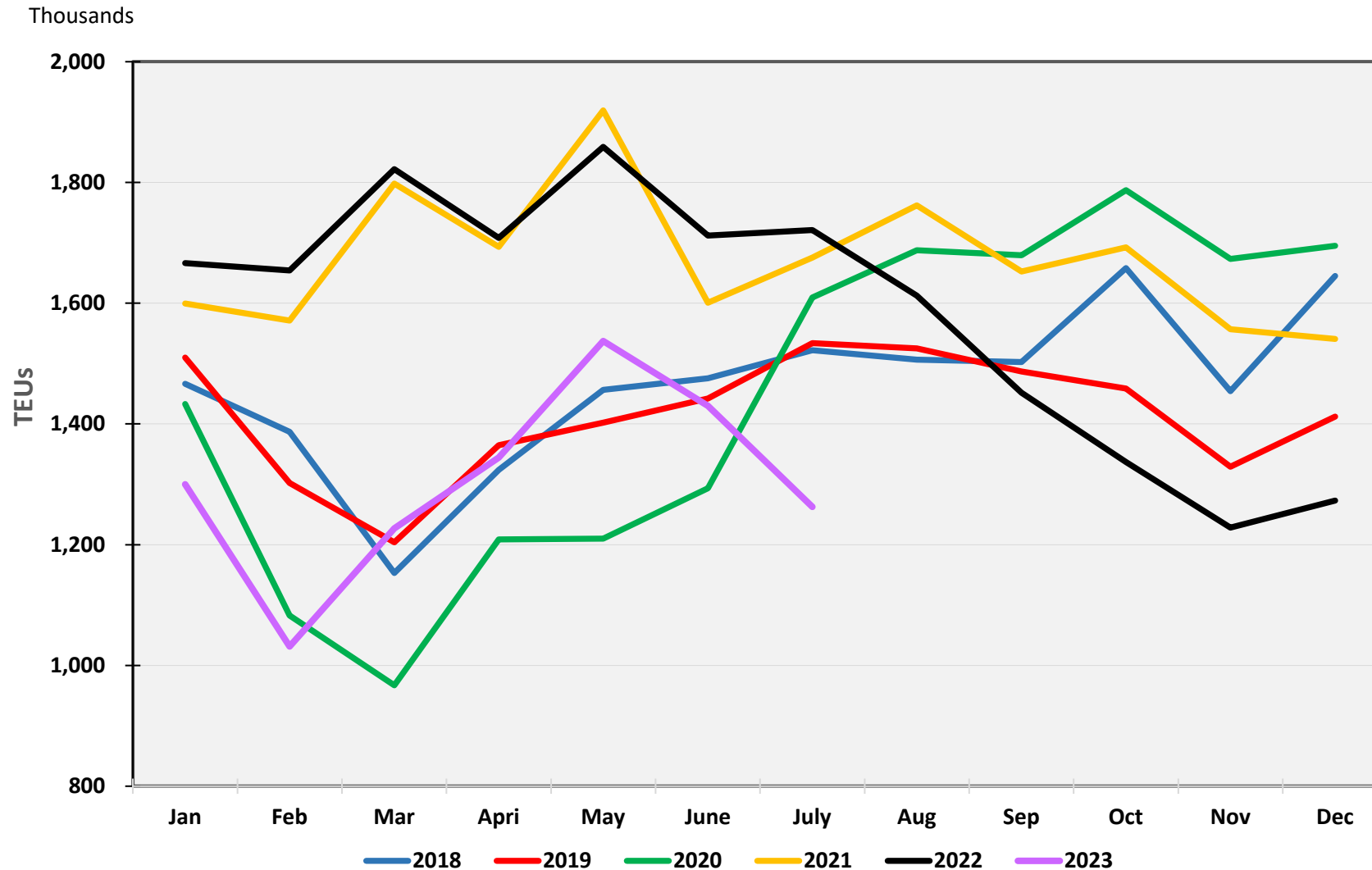
Item 1

Performance Report July 2023

Port Container Throughput (TEUs) – July 2023

	POLA		POLB		Combined	
	Jul-23	% Change*	Jul-23	% Change*	Jul-23	% Change*
Imports	364,208	-25.0%	271,086	-27.9%	635,294	-26.3%
Exports	110,372	6.2%	90,134	-17.6%	200,506	-6.0%
Total Loaded	474,580	-19.5%	361,220	-25.6%	835,800	-22.2%
Empty	209,711	-39.4%	217,030	-27.7%	426,741	-34.0%
Total	684,291	-26.8%	578,250	-26.4%	1,262,541	-26.7%
	YTD	% Change*	YTD	% Change*	YTD	% Change*
Imports	2,493,763	-22.9%	2,018,027	-28.9%	4,511,790	-25.7%
Exports	691,768	-5.3%	785,229	-4.2%	1,476,997	-4.8%
Total Loaded	3,185,531	-19.6%	2,803,256	-23.3%	5,988,787	-21.4%
Empty	1,636,139	-31.4%	1,507,672	-29.5%	3,143,811	-30.5%
Total	4,821,670	-24.1%	4,310,928	-25.6%	9,132,598	-24.8%

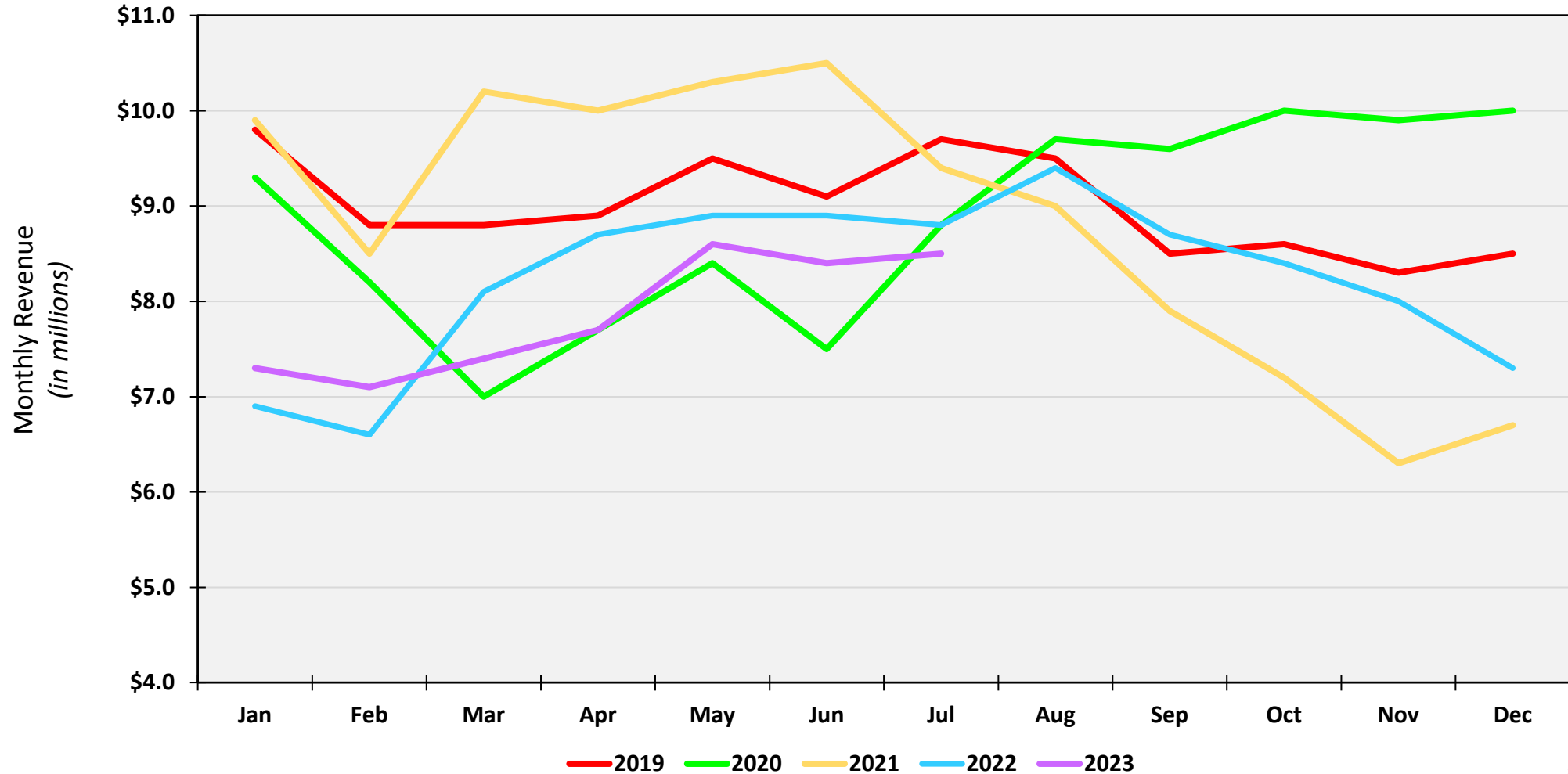
SP Bay Port TEUs Trends through July 2023



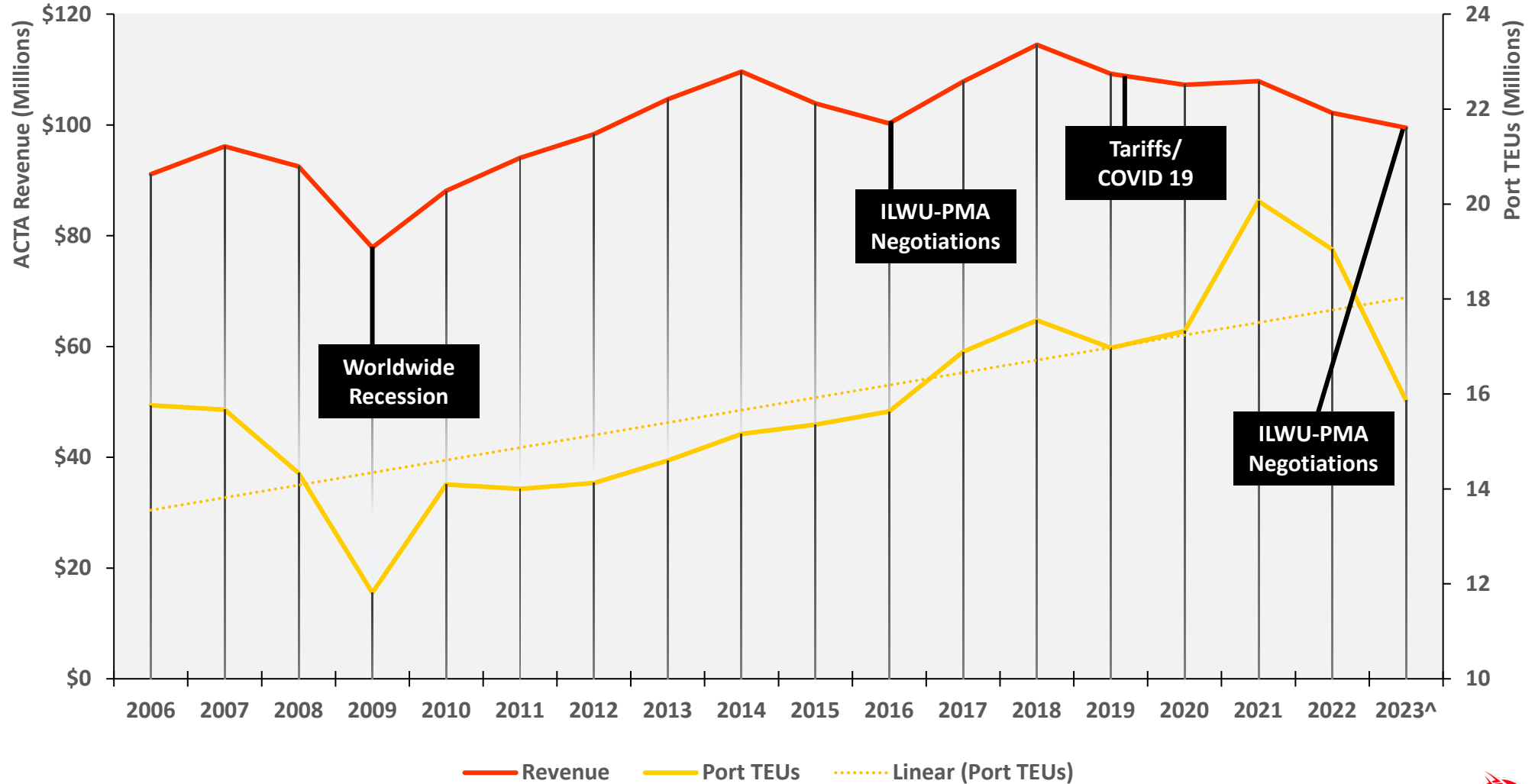
Alameda Corridor Performance July 2023

	July 2023	CY23	FY24
Revenue	\$8.5 M	\$55.1 M	\$8.5
Change from 2022	- 3.8 %	- 3.2 %	- 3.8 %
TEU's	380,608	2,434,360	380,608
Change from 2022	- 13.6 %	- 9.3 %	- 13.6 %

Corridor Revenue Performance CY2019 to CY2023



ACTA Revenue & Port TEUS



^ Projected Total