

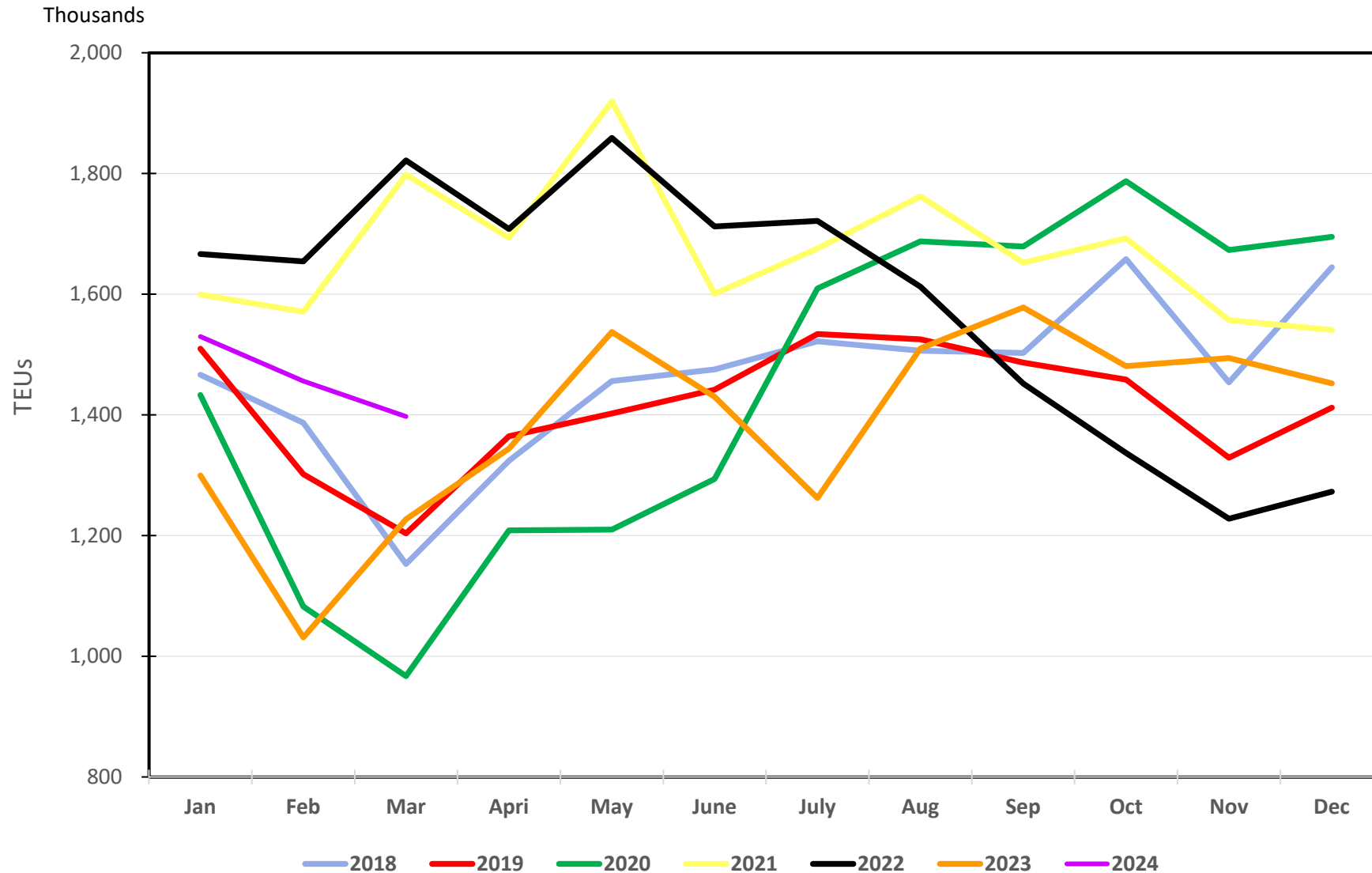
# Performance Report March 2024

## Port Container Throughput (TEUs) – March 2024

	POLA		POLB		Combined	
	Mar-24	% Change	Mar-24	% Change	Mar-24	% Change
<b>Imports</b>	379,541	18.6%	302,521	8.4%	682,062	13.8%
<b>Exports</b>	144,718	47.3%	105,099	-21.3%	249,817	7.8%
<b>Total Loaded</b>	<b>524,259</b>	<b>25.3%</b>	<b>407,620</b>	<b>-1.2%</b>	<b>931,879</b>	<b>12.2%</b>
<b>Empty</b>	219,158	6.9%	246,464	28.9%	465,622	17.5%
<b>Total</b>	743,417	19.3%	654,084	8.3%	1,397,501	13.9%
	YTD	% Change*	YTD	% Change*	YTD	% Change*
<b>Imports</b>	1,230,069	30.7%	957,709	20.1%	2,187,778	25.8%
<b>Exports</b>	404,026	42.6%	279,098	-20.3%	683,124	7.8%
<b>Total Loaded</b>	<b>1,634,095</b>	<b>33.4%</b>	<b>1,236,807</b>	<b>7.8%</b>	<b>2,870,902</b>	<b>21.0%</b>
<b>Empty</b>	746,408	21.9%	766,014	33.5%	1,512,422	27.5%
<b>Total</b>	2,380,503	29.6%	2,002,821	16.4%	4,383,324	23.2%

\* Relative to same period in CY 2023

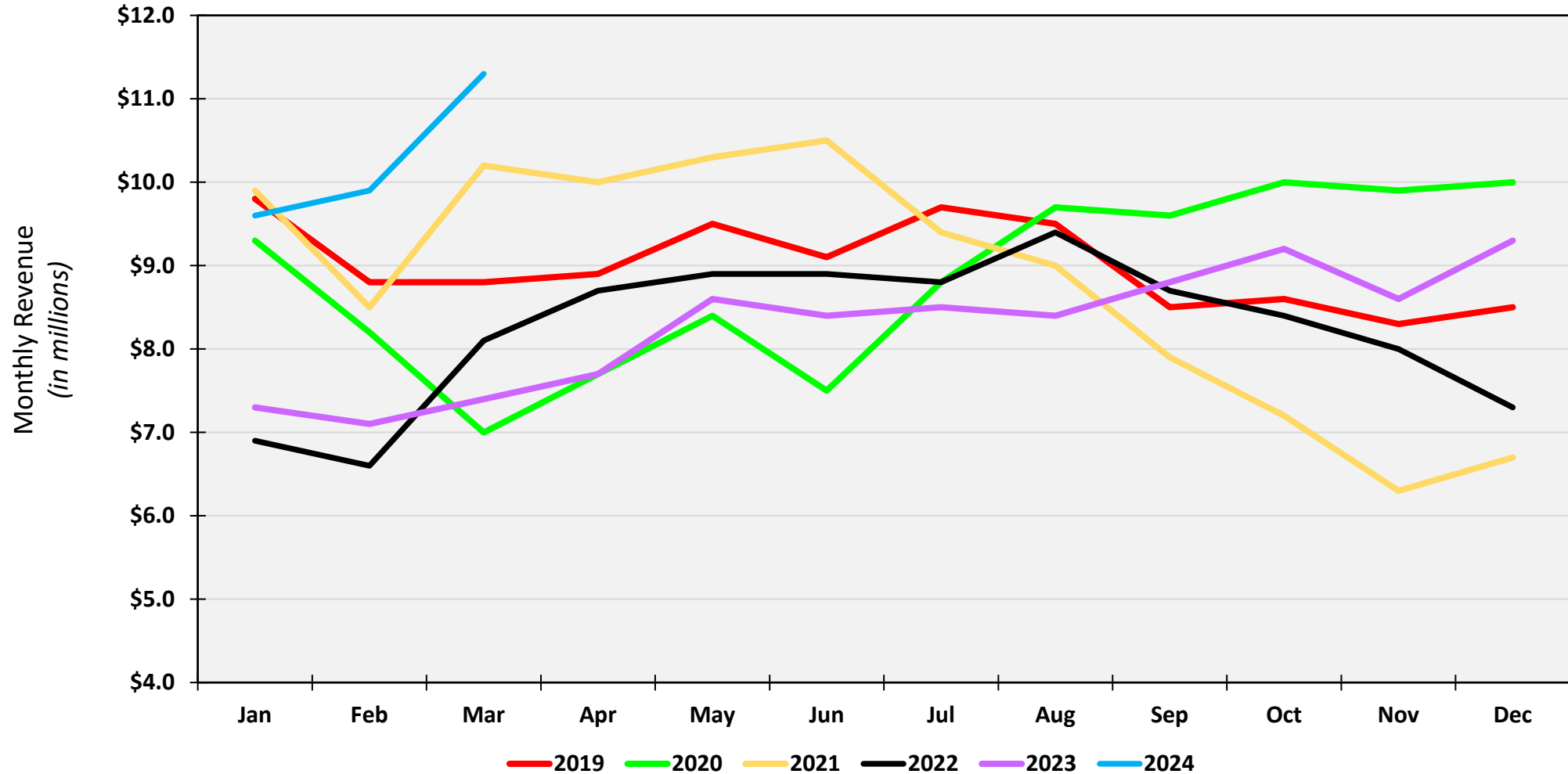
# SP Bay Port TEUs Trends through March 2024



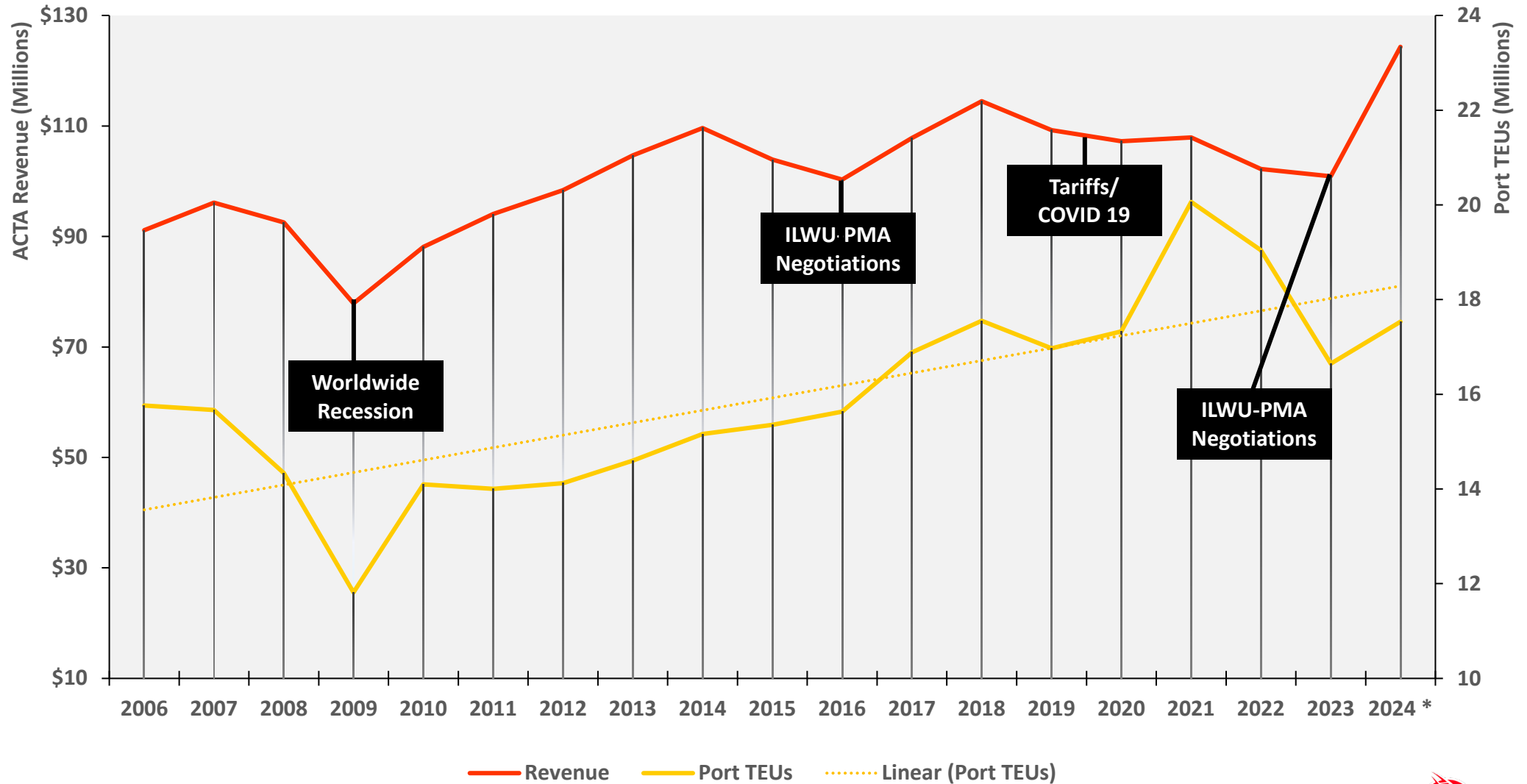
# Alameda Corridor Performance March 2024

	Mar 2024	CY24	FY24
<b>Revenue</b>	\$11.3 M	\$30.8 M	\$83.5 M
Change from 2023	52.3 %	40.6 %	15.1 %
<b>TEU's</b>	475,889	1,318,779	3,670,920
Change from 2023	49.2 %	37.8 %	7.4 %

# Corridor Revenue Performance CY2019 to CY2024



# ACTA Revenue & Port TEUS



\*Numbers updated thru March 2024, then averaged for year.