

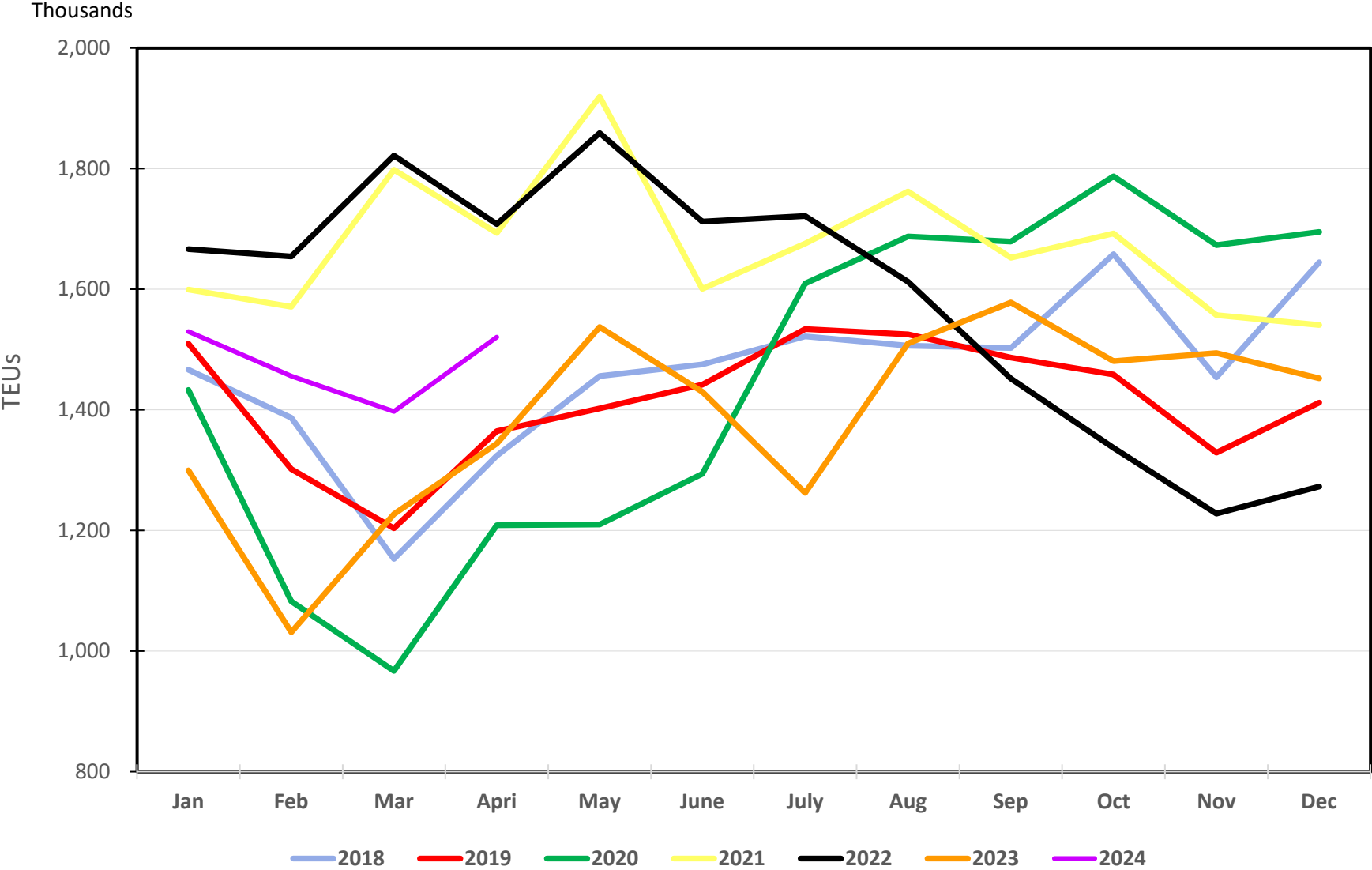
Performance Report April 2024

Port Container Throughput (TEUs) – April 2024

	POLA		POLB		Combined	
	Apr-24	%Change	Apr-24	%Change	Apr-24	% Change
Imports	416,929	21.3%	364,665	16.3%	781,594	18.9%
Exports	133,046	50.8%	98,266	-19.9%	231,312	9.7%
Total Loaded	549,975	27.3%	462,931	6.2%	1,012,906	16.7%
Empty	220,362	-14.0%	287,493	30.7%	507,855	6.7%
Total	770,337	11.9%	750,424	14.4%	1,520,761	13.1%
	YTD	% Change*	YTD	% Change*	YTD	% Change*
Imports	1,646,998	28.2%	1,322,375	19.0%	2,969,373	23.9%
Exports	537,072	44.5%	377,363	-20.2%	914,435	8.3%
Total Loaded	2,184,070	31.8%	1,699,738	7.3%	3,883,808	19.9%
Empty	966,771	11.3%	1,053,508	32.7%	2,020,279	21.5%
Total	3,150,841	24.8%	2,753,246	15.8%	5,904,087	20.4%

* Relative to same period in CY 2023

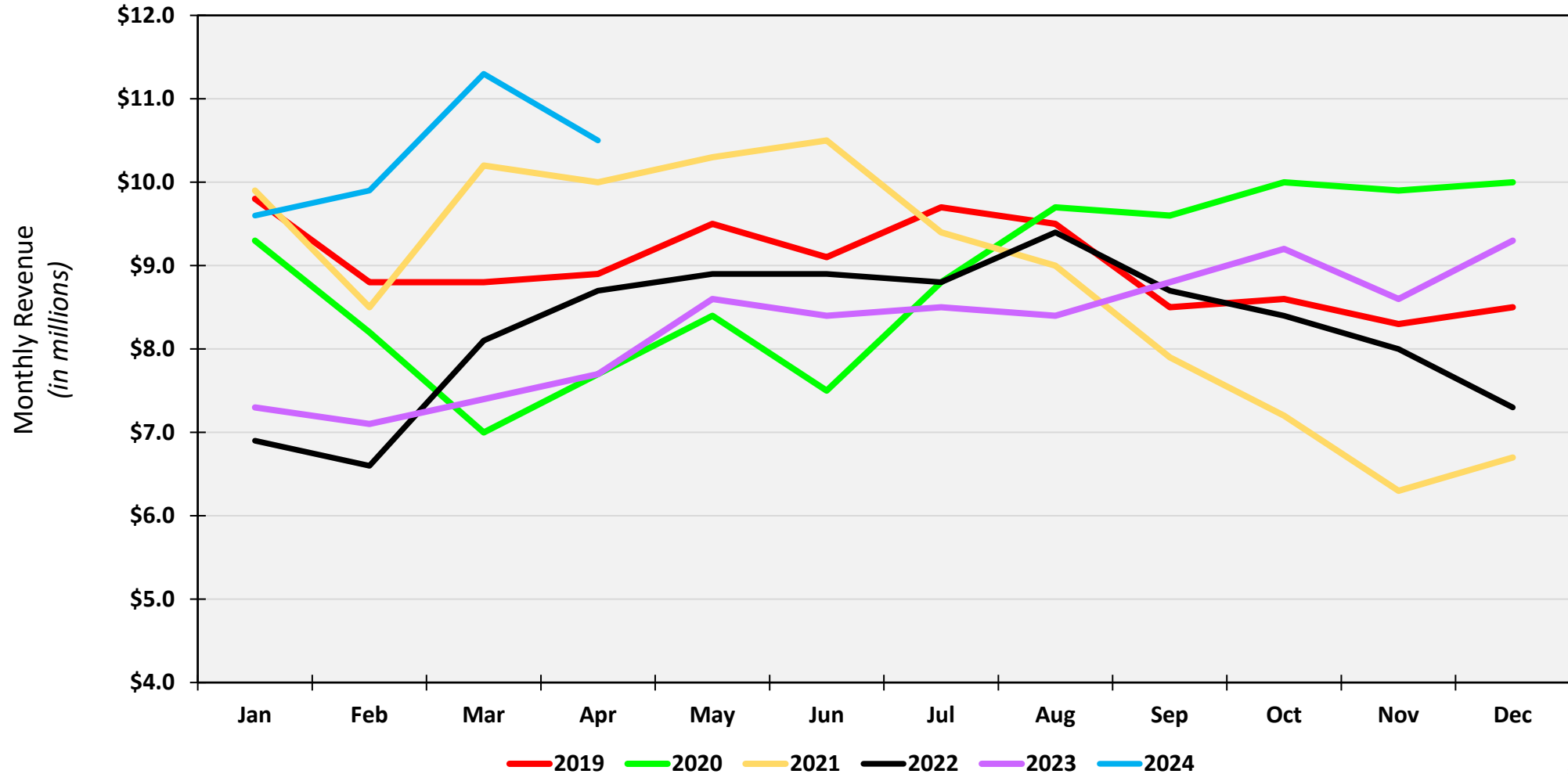
SP Bay Port TEUs Trends through April 2024



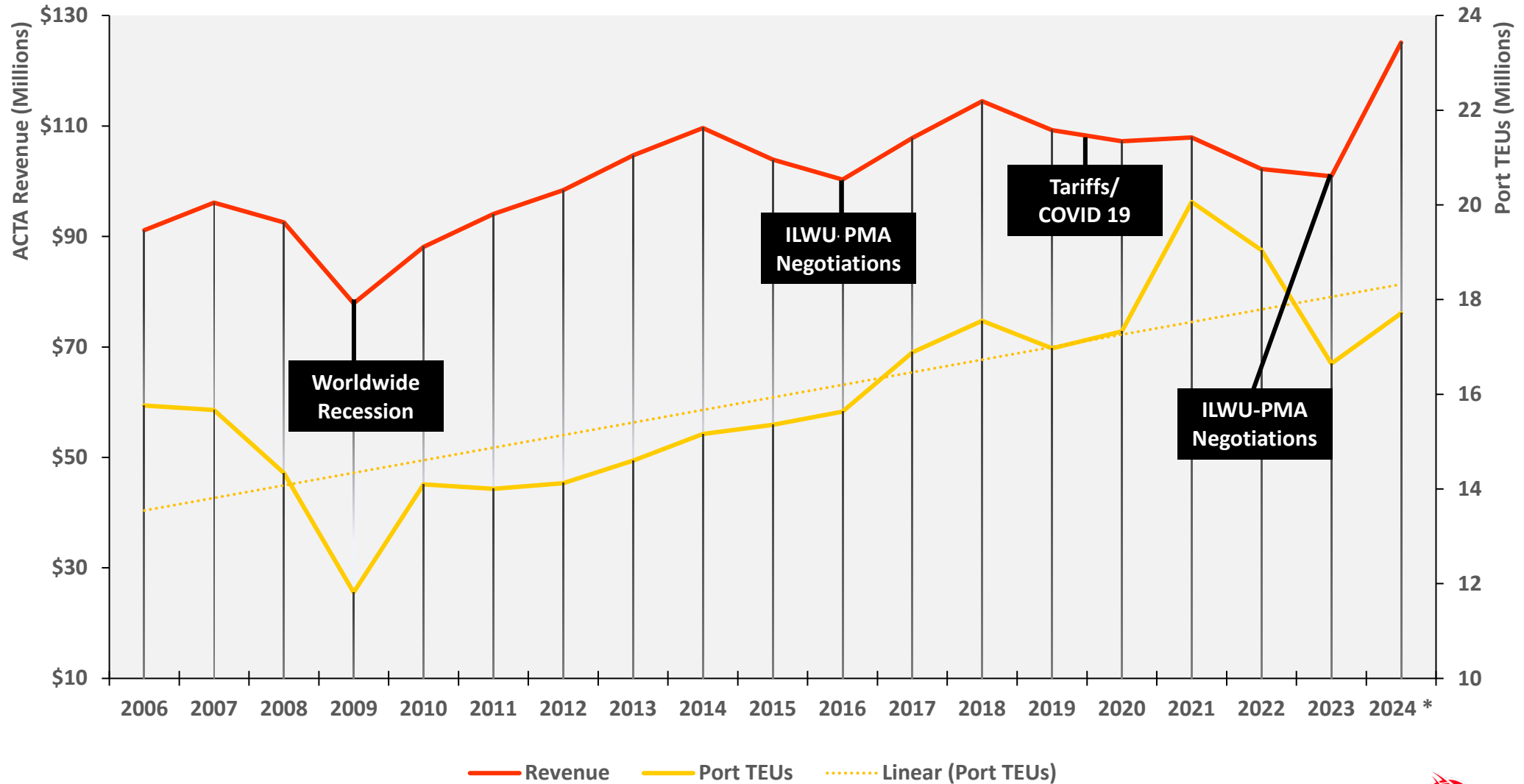
Alameda Corridor Performance April 2024

	Apr 2024	CY24	FY24
Revenue	\$10.5 M	\$41.3 M	\$94.0 M
Change from 2023	35.2 %	39.2 %	17.1 %
TEU's	435,376	1,754,154	4,106,295
Change from 2023	27.9 %	35.2 %	9.2 %

Corridor Revenue Performance CY2019 to CY2024



ACTA Revenue & Port TEUS



*Numbers updated thru April 2024, then averaged for year.