

Key Financial Activity

April '24 vs. '23

Corridor Performance

April '24 vs. '23

Railroad Self-Assessment Revenue

	'24	'23	Change
Apr Revenue	\$10.5 M	\$7.8 M	35.2 %
Calendar Year to Date (Jan-Apr) *	\$41.30 M	\$29.6 M	39.2 %
Fiscal Year to Date (July-Apr) *	\$94.0 M	\$80.3 M	17.1 %

* Note: Does not include reconciliations / adjustments for fiscal year-end.

Corridor Volumes

April '24 vs. '23

TEUs (Daily Containers)

Operations – On Corridor

	'24	'23	Change
TEU's *	414,582 (7,534)	330,325 (5,977)	25.5 %
Calendar Year to Date	1,683,706 (7,586)	1,261,061 (5,705)	33.5 %
Fiscal Year to Date	3,965,678 (7,088)	3,643,117 (6,506)	8.9 %

Operations – Around Corridor (Container Charges)

	'24	'23	Change
TEU's *	20,794 (378)	10,077 (182)	106.3 %
Calendar Year to Date	70,448 (317)	36,505 (165)	93.0 %
Fiscal Year to Date	140,618 (251)	116,201 (208)	21.0 %

Operations – Combined

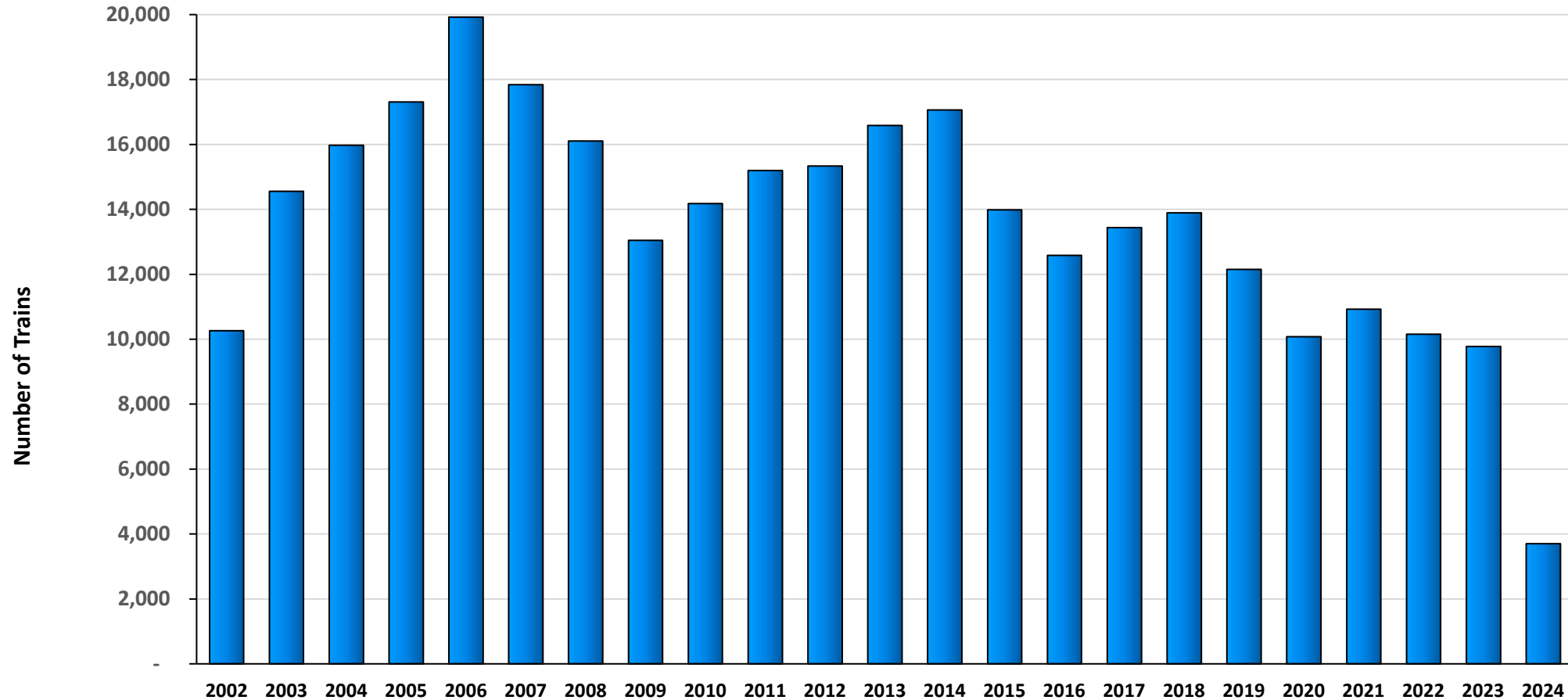
	'24	'23	Change
TEU's *	435,376 (7,912)	340,402 (6,160)	27.9 %
Calendar Year to Date	1,754,154 (7,903)	1,297,566 (5,870)	35.2 %
Fiscal Year to Date	4,106,295 (7,340)	3,759,317 (6,713)	9.2 %

Note: Numbers in () are the Average Daily Containers, 2024 Daily TEU's ÷ 1.8343 = Containers.

Numbers in () are the Average Daily Containers, 2023 Daily TEU's ÷ 1.8421 = Containers.

* Containers trucked to off-dock intermodal yards that are charged an ACTA fee

Alameda Corridor Train Counts



Average Daily Trains*:

<u>2002</u>	<u>2003</u>	<u>2004</u>	<u>2005</u>	<u>2006</u>	<u>2007</u>	<u>2008</u>	<u>2009</u>	<u>2010</u>	<u>2011</u>	<u>2012</u>	<u>2013</u>
39	40	44	47	55	49	44	36	39	42	42	45
<u>2014</u>	<u>2015</u>	<u>2016</u>	<u>2017</u>	<u>2018</u>	<u>2019</u>	<u>2020</u>	<u>2021</u>	<u>2022</u>	<u>2023</u>	<u>2024</u>	
47	38	34	37	38	33	28	30	28	27	31	

Use Fees & Container Charges

as of April 30, 2024

