

REPORT ITEM 1

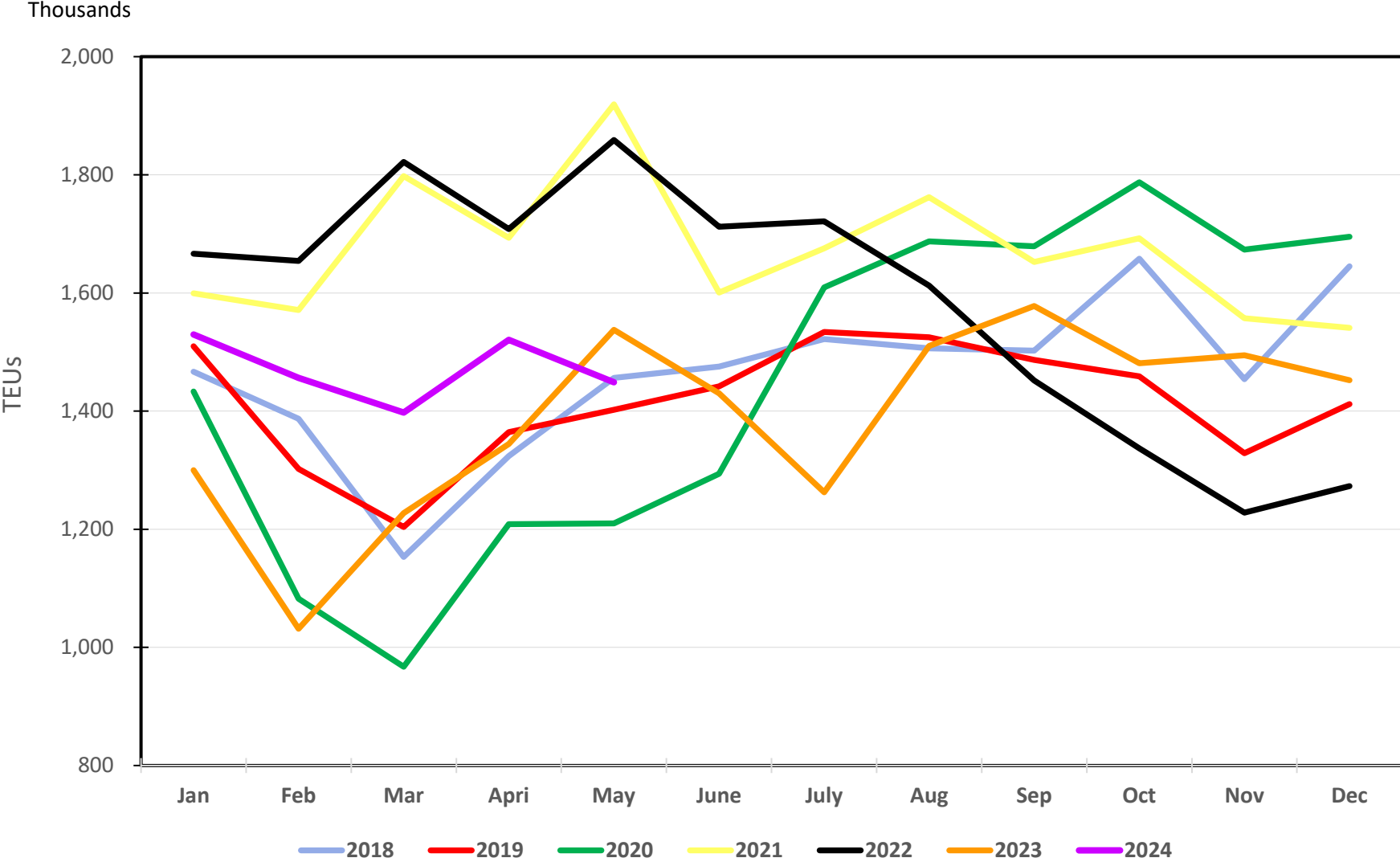
**Performance Report
May 2024**

Port Container Throughput (TEUs) – May 2024

	POLA		POLB		Combined	
	May-24	%Change	May-24	%Change	May-24	%Change
Imports	390,663	-4.5%	345,271	-4.5%	735,934	-4.5%
Exports	125,963	23.8%	100,885	-21.1%	226,848	-1.2%
Total Loaded	516,626	1.1%	446,156	-8.9%	962,782	-3.8%
Empty	236,267	-11.9%	249,782	-7.0%	486,049	-9.5%
Total	752,893	-3.4%	695,938	-8.2%	1,448,831	-5.8%
	YTD	% Change*	YTD	% Change*	YTD	% Change*
Imports	2,037,660	20.3%	1,667,646	13.2%	3,705,306	17.0%
Exports	663,035	40.1%	478,249	-20.4%	1,141,284	6.3%
Total Loaded	2,700,695	24.6%	2,145,895	3.5%	4,846,590	14.3%
Empty	1,203,039	5.8%	1,303,290	22.7%	2,506,329	14.0%
Total	3,903,734	18.1%	3,449,185	10.0%	7,352,919	14.2%

* Relative to same period in CY 2023

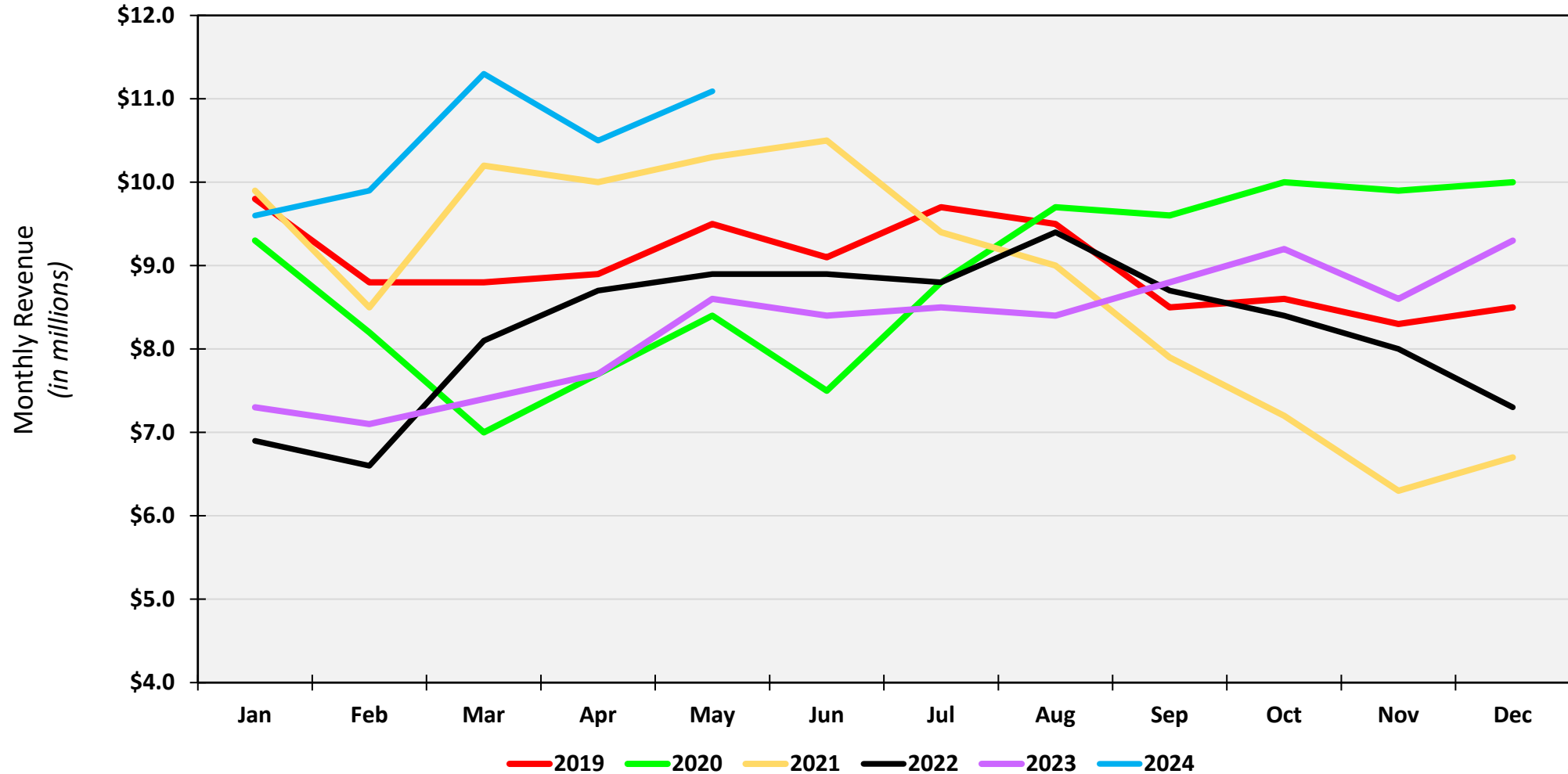
SP Bay Port TEUs Trends



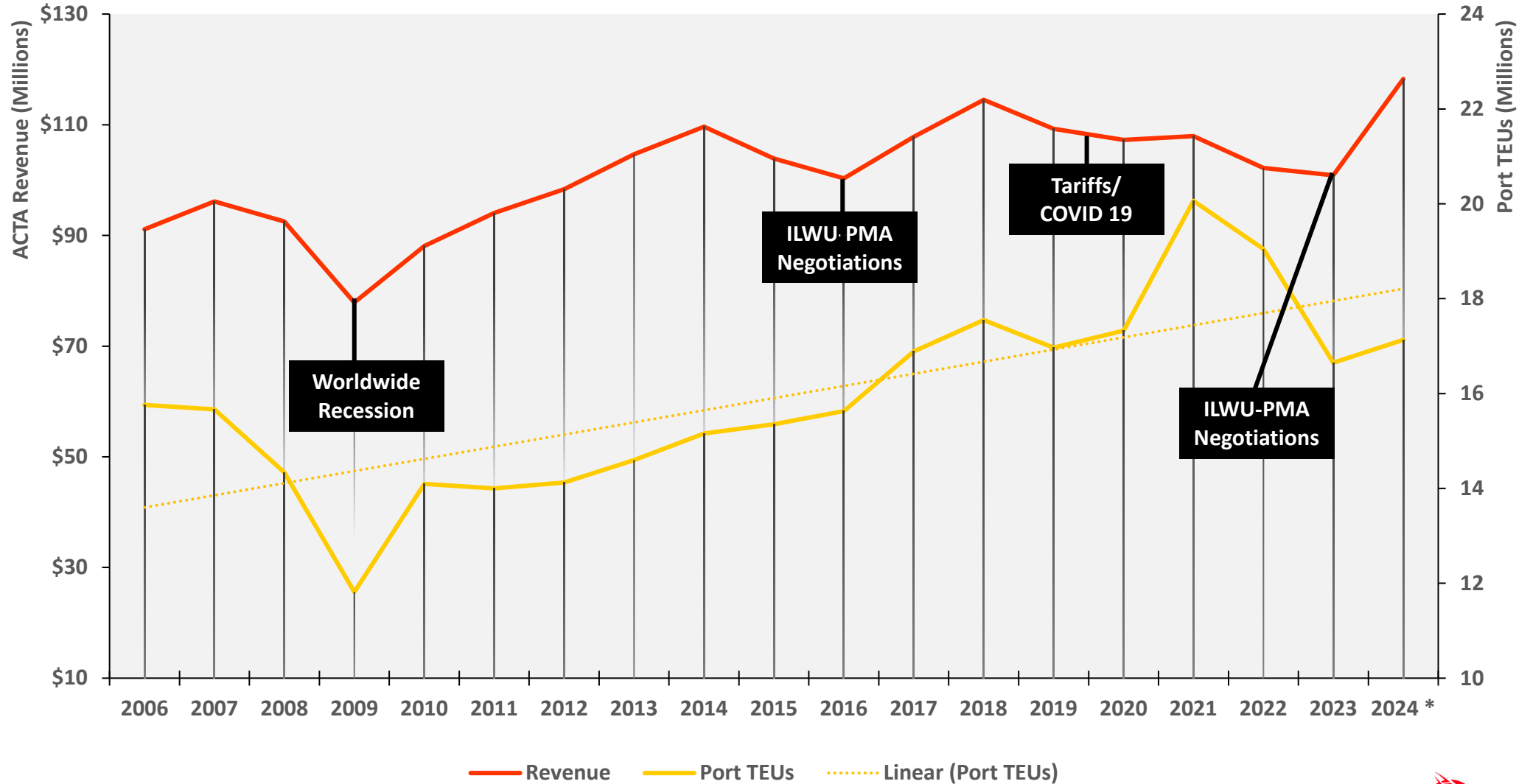
Alameda Corridor Performance May 2024

	May 2024	CY24	FY24
Revenue	\$11.1 M	\$52.3 M	\$105.1 M
Change from 2023	29.65 %	37.1 %	18.3 %
TEU's	475,353	2,229,508	4,581,649
Change from 2023	26.1 %	33.1 %	10.8 %

Corridor Revenue Performance CY2019 to CY2024



ACTA Revenue & Port TEUS



*Numbers updated thru April 2024, then averaged for year.